

www.eurosteelinternational.com
www.kirbybuilder.com



EURO STEEL

Steel Pioneer

Qatar, Oman



JUST MAKE IT
SIMPLE & CLEAN

BUSINESS EXPERTS

WE WILL LEAD YOU TO YOUR
GOAL

Contents

- Introduction to Eurosteel
- Vision, Mission , Values
- Pre-Engineering Buildings
- Buildings Components
- Structural System (Main Frames)
- Secondary Members
- Cladding Systems
- Insulation
- Polyurethane Insulated Panels
- Structural Steel
- Light Gauge Cold -Formed Steel Buildings
- Accessories
- Organization Chart
- ISO Certificates
- Kirby Certificates
- Customers
- Testimonials
- Projects Completed & Ongoing
- Office Location Map
- Projects Photo



INTRODUCTION TO EURO STEEL

EUROSTEEL operating with highly qualified and decades of experienced staff with reputed companies on various high level projects in the Gulf region.

Company policy and obligations is to satisfy Customer's needs and expectations in terms of product Quality and Services, understanding Customer needs and providing them the right and efficient solutions under focussing on establishing long lasting relationships.

The Engineering department, comprising a team of highly qualified experts to ensure the right choice of selecting the materials and the finished product is complying with Customer's specified requirements.

The Installation department being developed, implementing a stringent and highly complex preventive installation system for all our projects to ensure the right condition of equipments for the sake of smooth operations.

Depending on the previous reasons, Eurosteel for Steel Building was able to gain the admiration and trust of Kirby modern buildings, and to be one of the most important suppliers and distributors to Kirby Steel in the State of Qatar.



EURO STEEL
Steel Pioneer

VISION

EUROSTEEL is in the race against time to be one of the best recognized companies for design, manufacture, supply, and erection of Pre-Engineered Steel Buildings (PEB) and Structures.

MISSION

To be recognized as the global leader for the design, manufacture, supply and erection of Pre-Engineered Steel Buildings (PEB) and Structures. EUROSTEEL will achieve this vision by consistently delivering high-quality products to our customers, accompanied by personalized service and a commitment to excellence.

VALUES

Straight-talking: We encourage open debate where the best ideas win.

Customer centric: We put our customers at the center of our focus and initiatives with the objective of providing them with unmatched levels of services and products.

Teamwork: We actively share information and ideas, enthusiastically working to make those around us better.

Diversity and respect: The diversity of our workforce is an asset and we treat everyone with dignity and respect regardless of status, gender, education, ethnicity or religion.

Empowerment: We empower people to make decisions with a bias for action.

Employees as core assets: We believe that our employees are our most valuable resource, and do whatever it takes for their continuous training, development and motivation.

Meritocracy: The rewards and career advancements of our people are based on their performance and capabilities, not on their wasta (influence).



There are various applications of PEB as Mentioned below

Factories
Warehouses
Supermarkets
Aircraft Hangar
Metro Stations
Shipyards
Showrooms, Workshops, Offices
Schools, Hospitals, Site Offices
Fuel Stations, Bus Shelters, Car Parks
Cold Storages
Shopping Malls



PRE-ENGINEERED BUILDINGS

PEB is a steel structure built over a structural concept of primary members, secondary members, and the cover sheeting connected to each other. The structural members are custom designed to be lighter in weight and high in strength. It can be fitted with different structural additions like trusses, mezzanine floors, fascia, canopies and crane systems as per user requirements.

There are many advantages of PEB as mentioned below

Single source responsibility

Faster Installation

Economical

Factory- controlled quality

Practically maintenance free

Upto 90 M clear spans

Flexibility in expansion

Energy efficient roof and wall systems

Earthquake- resistant



Building Components



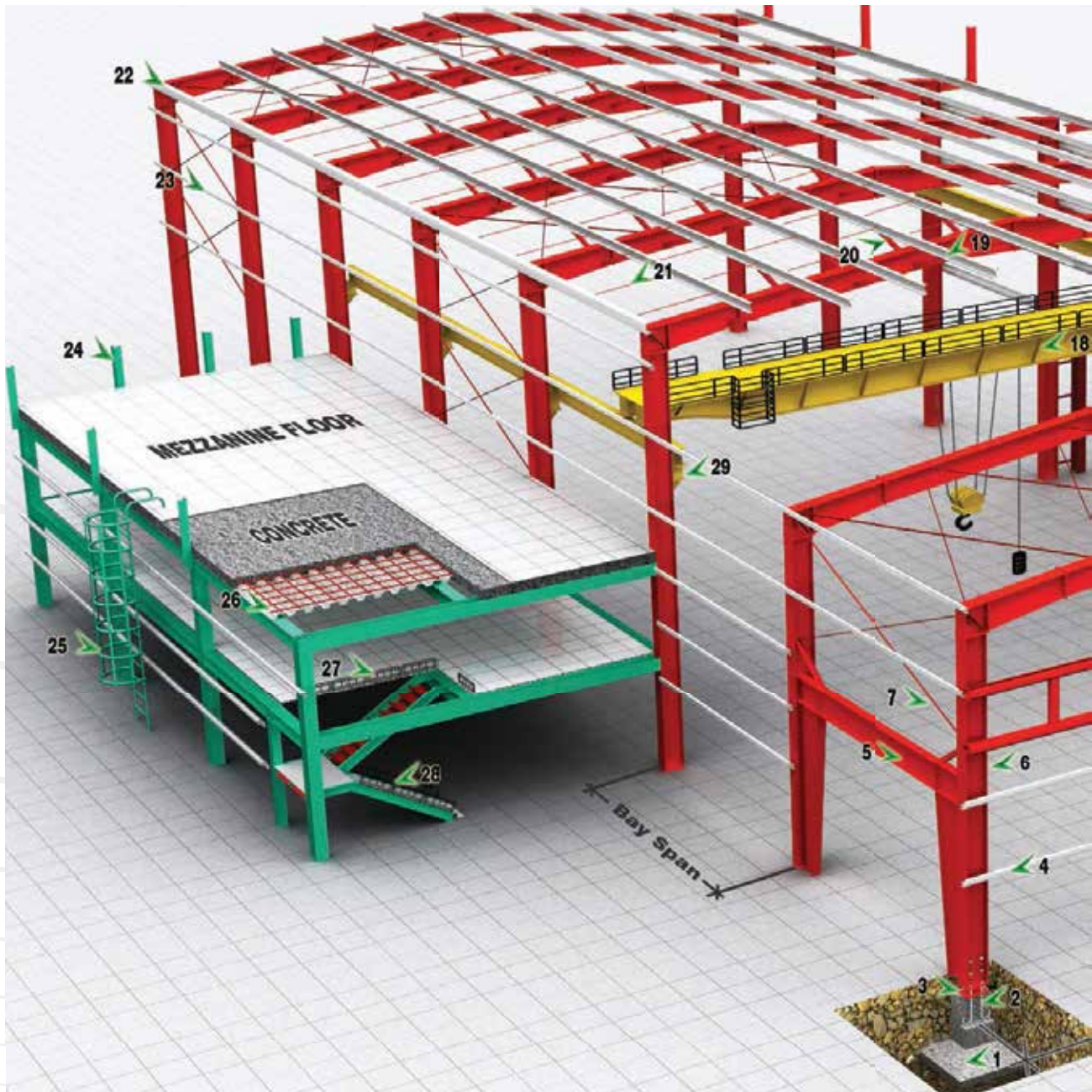
1. KR Roof Panel
2. KR Wall Panel
3. Canopy
4. Roll Up Door (Manual/Electrical)
5. Double Slide Door
6. Rake Trim
7. Sky Light (Translucent Panel)
8. Ridge Ventilator (With Bird Mesh)
9. Power Ventilator
10. Eave Gutter
11. Louver With Bird Mesh
12. Masonry Trim
13. Window With Insect Screen
14. Downspout



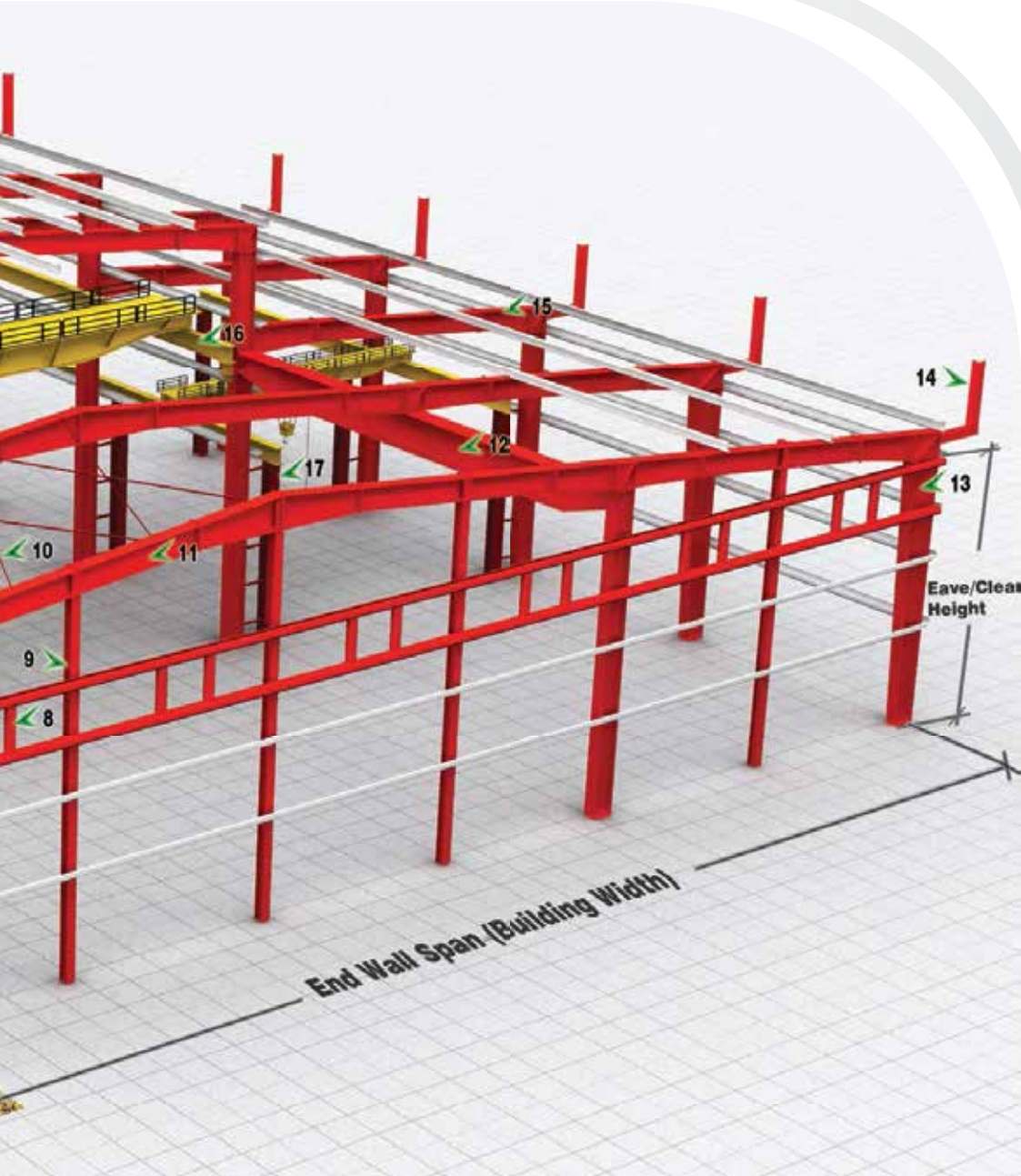
- 15. Single Walk Door
- 16. Curved Eave
- 17. Industrial Louver
- 18. Corner Trim
- 19. Eave Trim
- 20. Flush Fascia
- 21. Strip Skylight

- 22. Roof Monitor
- 23. Double Walk Door
- 24. Rood Extension
- 25. Return Downspout
- 26. Brick Wall
- 27. Wall Light (Translucent Panel)
- 28. Curved Cantilever Fascia

Building Components (contd.)



- | | |
|------------------------------------|-------------------------------------|
| 1. Concrete Footing | 8. Framed Opening (Window/Louwer) |
| 2. Anchor Bolts | 9. End Wall Wind Column |
| 3. Base Plate | 10. Roof Bracing (Angle/Rod/Cables) |
| 4. End Wall Girt | 11. Main Frame Rafter |
| 5. Portal Bracing | 12. Jack Beam |
| 6. Main Frame Straight Column | 13. Main Frame Tapered Column |
| 7. Wall Bracing (Angle/Rod/Cables) | 14. Cantilevered Fascia Frame |



- 15. Lean To Frame
- 16. Crane Beam
- 17. Crane Column
- 18. EOT Crane
- 19. Roof Purlin
- 20. Flange Brace
- 21. Sag Rod

- 22. Eave Strut
- 23. Side wall Girt
- 24. Flush Fascia Frame
- 25. Cage Ladder
- 26. Deck Panel with Steel Mesh
- 27. Hand Rail (Steel)
- 28. Staircase(Checker plate/C channel)
- 29. Crane Bracket

STRUCTURAL SYSTEM

Structural systems are the main load carrying and support members of a pre-engineered building. The shape and size vary based on application and requirements.

The main frame members are the main load carrying member of a structural system which include columns, endwall posts, rafters and other main support members.

All structural steel sections and welded plate members shall be designed in accordance with the applicable sections, relating to design requirements and allowable stresses, of the latest edition of the American Institute of Steel Construction "Specification for the Design, Fabrication and Erection of the Structural Steel for Buildings"

General guidelines on recommend frame types for different width are given below:

Main Frames

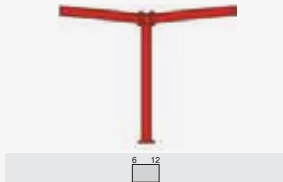
■ L - CANOPY (L-CAN)



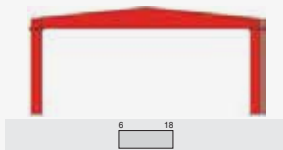
■ LEAN-TO (L-TO)



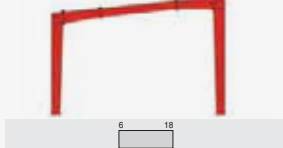
■ BUTTERFLY CANOPY (T-CAN)



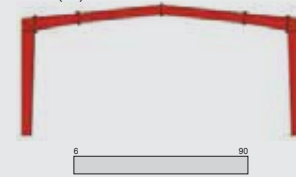
■ SPACE SAVER (S V)



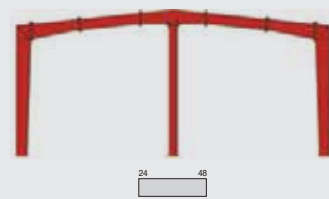
■ SINGLE SLOPE (SS)



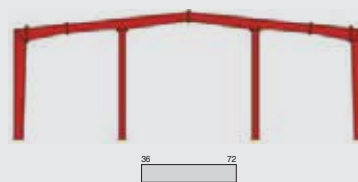
■ RIGID FRAME (RF)



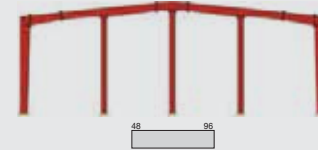
■ BEAM AND COLUMN (BC1-)



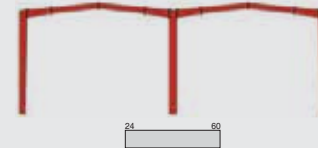
■ BEAM AND COLUMN (BC2-)



■ BEAM AND COLUMN (BC3-)



■ MULTI-SPAN (MS)



Suggested width range (meters) for most economical buildings
 Standard Eave height: 3M/8-M; Std bay spacing: 6M/7.5M/9M;
 Standard Loadings: Live load; 1.0/0.6/0.5 KN/M², Wind load: 1.25/1.0/0.75 KN/M

Mezannines

Standard Mezzanine Floor Systems consist of galvanized profiled steel deck, joists, beams and intermediate support columns. Main beams can span in lateral directions and joists in longitudinal directions.



Crane Beams

Buildings can be designed to support any required crane system. Generally, overhead travelling cranes up to 15 MT are supported on brackets. For higher capacities, an independent support system is provided. Crane support for overhead travelling cranes includes brackets, beams and bracings.



Fascias and Canopies

Euro Steel provides fascias specially designed to your requirements. These can be either vertical, horizontal or with curved sheeting to enhance the architectural look of your building. Wall canopies at eaves, endwall, over doors and windows are also available.



SECONDARY MEMBERS

Secondary structural framing refers to purlins, girts, eave struts, wind bracing, Flange bracing, base angles, clips and other miscellaneous structural parts.

Purlins, girts and eave struts are cold form steel members which have a minimum yield strength of 345 MPa (50,000 psi) and will conform to the physical specifications of ASTM A1011 (Grade 50) or ASTM A653- (Grade 50).

Purlins & Girts

Purlins and girts are roll formed Z sections, 200 mm deep with 64 mm Flanges shall have a 16 mm stiffening lip formed at 45° to the Flange



Eave Strut

Eave struts are 200 mm deep with a 104 mm wide top Flange, a 118 mm wide bottom Flange, both are formed parallel to the roof slope. Each Flange has a 24 mm stiffener lip. Structural members are located along the sidewall; at the intersection of the planes of the roof and wall. It is constructed from cold formed 'C' sections and is rolled to suit the roof slope. This member transmit longitudinal wind force on the end walls from roof brace rods to wall brace rods.



C – Section

C- Sections are 200mm deep with a 100mm Flange. The Flanges are perpendicular to the web and have a 24mm stiffening lip.





Bracings

The Cable Bracing is a primary member that ensures the stability of the building against forces in the longitudinal direction such as Wind, Cranes, and Earthquakes.

Specifications

1. Cables are made of galvanized extra high strength seven strand cable of 2/1" diameter conforming to ASTM A2003 – 475 Class 1 (G40).
2. Terminals are made of galvanized (G25) 40mm diameter rods conforming to ASTM A36
3. Hill side washers are made of aluminum or galvanized cast iron.

Advantages

- Higher strength 120 KN ultimate tensile strength
- Better corrosion resistance (Galvanized)
- Easy packing and shipping (Round Packing)
- Cable can be fabricated and shipped for any required length.
- Easy erection.
- Light weight



CLADDING SYSTEMS

Panel Profiles

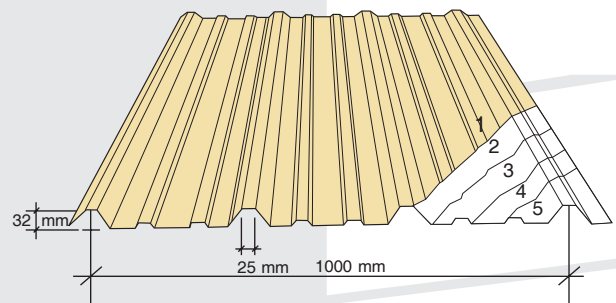
EuroSteel offers five types of affordable, durable and easy -to-install cladding panels to enhance the visual appearance of our customers buildings.

EuroSteel Roof (KR)

EuroSteel Roof profile is strong and cost effective and was developed specifically for roofing applications. The bearing leg design permits easier installation and maintenance, supports thicker layers of insulation and allows easier curvature for a visually appealing finish.

Coverage Area: 1000mm

Rib Depth: 32mm

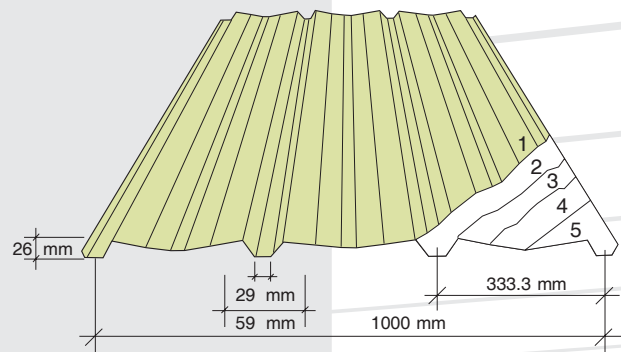


EuroSteel Wall (KW)

EuroSteel Wall is a cost effective, partially concealed fastener panel with a sculptured valley shape between the major ribs for a superior architectural look for external walls.

Coverage Area: 1000mm

Rib Depth: 26mm

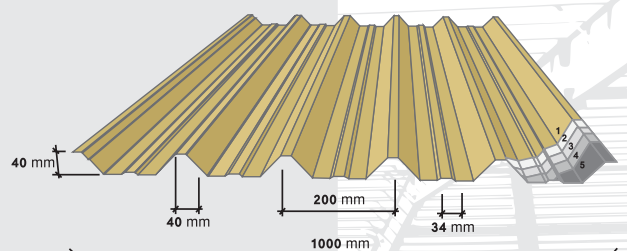


KR Cladding Systems (KCS) (Middle East & Africa Region Only):

KCS profile offers extra strong resistance to wind & gravitational loads and can be used for roofing, wall and decking applications. KCS was developed by KR specifically to meet more stringent design load requirements.

Coverage Area: 1000mm

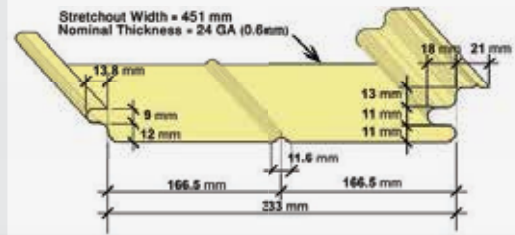
Rib Depth: 40 mm



EuroSteel (KR) Concealed Fastener

The concealed fastener single skin cladding type KC is used for exterior wall cladding and internal wall and roof liners. The panels have interlocking tongue and groove joints. The standard panels are available in 0.6 mm nominal thickness.

Coverage Area: 1000mm



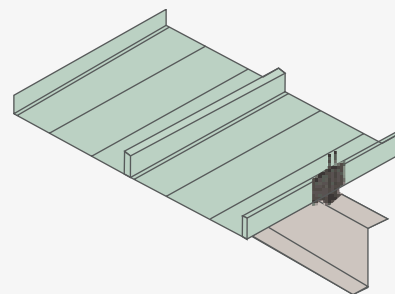
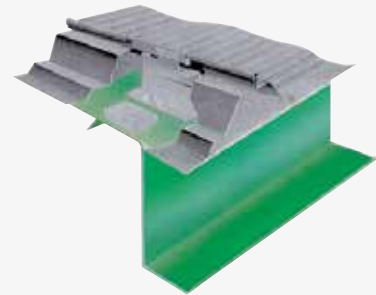
STANDING SEAM ROOF SYSTEMS

KLS 10

These panels help eliminate cracking and / or blistering which is common in other roof materials. It also allows roof movement for expansion and contraction along with panel strength and durability.

KSS 20/18

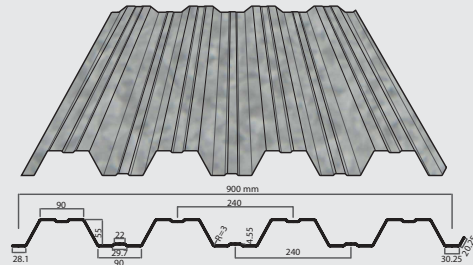
These panels have a vertical standing seam design and are highly Flexible with concealed fasteners. They provide weather tight Field seaming with no end closures. These panels enhance appearance in addition to exceptional durability and corrosion resistance. This system is architecturally compatible in various applications.



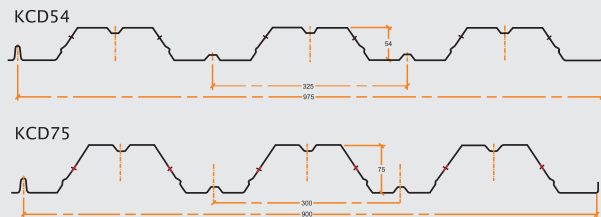
EuroSteel KR Deck

EuroSteel KR Deck Panels are used in high rise buildings, office buildings and mezzanine floors in industrial buildings and warehouses. These decks can be used as a permanent shuttering to support the wet concrete and help in creating composite slabs and floor beams. The continuous flange stiffeners and deep embossments increase the load carrying capacities. They provide for a stable and rigid working platform without any need of propping. These panels are roll formed from hot dip galvanized coils of 345 MPa with thickness starting from 0.6 mm to 1.2 mm.

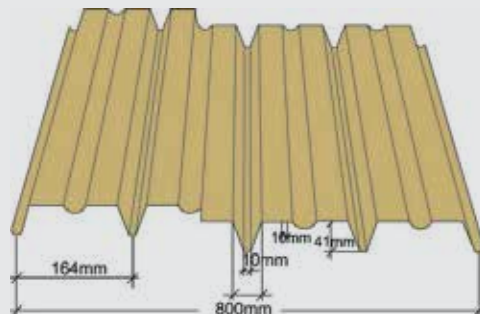
EuroSteel KR Deck with 55 mm depth
(South East Asia region)



EuroSteel KR Deck with 54 mm depth & Kirby Deck with 75 mm depth
(India region only)



Kirby Deck with 41 mm depth
(Middle East & Africa region)



EuroSteel KR Standard Colors

EuroSteel KR offers a wide range of top coats including polyester, silicone-modified polyester and

Middle East & Africa

Polyvinylfluoride (PVF2) in six standard color options. We can support requirements for RAL colors on request.



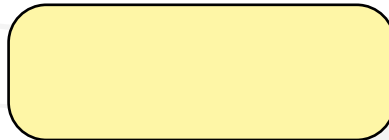
ARCTIC WHITE



CARIBBEAN BLUE



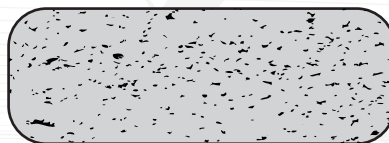
DESERT BEIGE



SUN GOLD



AUTUMN GREEN



GALVALUME/ALUZINC



EURO STEEL
Steel Pioneer

INSULATION

Insulation Material-Properties And Performance
Insulation Foam

INSULATION DATA: THERMAL CONDUCTIVITY AT 25 °C MEAN TEMPERATURE		
	POLYURETHANE	FIBERGLASS
Density	40 Kg/m ³	12 Kg/m ³
BTU/ft ² h.°F	0.14	0.29
KCAL/m ² h.°C	0.017	0.035
W/m ² .K	0.0198	0.041



Polyurethane Insulation

ES sandwich panels use high pressure injected polyurethane foam that is CFC Free, self extinguishing, can withstand intense heat, contains extreme low temperature and offers very low rates for water absorption and vapor transmission.

The injected foam also provides excellent adhesion to the panel's sheeting.

Fiber Glass Insulation

Fiber Glass insulation is a thermal and acoustic insulation that consists of intertwined and flexible glass fibers, which enables it to "package" air, resulting in low density that can be varied through compression.

It is fire safe and CFC free which does not emit toxic smoke. Fiber Glass insulation is laminated to steel facing with special chemical glue, completely filling the insulation cavity.

THERMAL HEAT TRANSMISSION FOR FIBER GLASS INSULATION				
THICKNESS OF INSULATION mm	"U" VALUES			
	AT ROOF		AT WALL	
	KCAL/m ² h.°C	BTU/ft ² h.°F	KCAL/m ² h.°C	BTU/ft ² h.°F
50	0.500	0.102	0.548	0.112
75	0.371	0.076	0.397	0.081
100	0.295	0.060	0.311	0.064
150	0.215	0.044	0.220	0.045



POLYURETHANE INSULATED PANELS

EuroSteel Insulated Sandwich Panels

EuroSteel sandwich panels are a cost effective solution for long lasting, modular construction.

Strong and versatile, EuroSteel sandwich panels allow for fast on-site assembly and simple retrofit of existing buildings. Further, the Polyurethane foam insulation delivers substantial savings on equipment and operation for the heating and cooling of buildings.

Finally, EuroSteel sandwich panels are durable and resistant to harsh weather conditions, reducing the recurring maintenance cost of the building.

EuroSteel Sandwich Panels – Product Range

EuroSteel Sandwich Panels offer highly durable, light weight, sound proof panels which are quick to install or rearrange.

EuroSteel Sandwich Panels can be applied to new metal

building constructions, to existing substructures, or over an existing roof or wall that is in need of repair and also provide higher insulation values.

It provides smooth visual finish for you external and internal Walls.

We offer four types of Sandwich Panels - EuroSteel Roofing Insulated Panel, EuroSteel Wall Insulated Panel, EuroSteel Concealed Fastener Insulated Panel and EuroSteel Fiber Glass Insulated panel .

The sandwich panels use the regular EuroSteel panel profiles, and are available in Aluminum and Steel Material and EuroSteel Standard colors.

Trim/Flashing

EuroSteel sandwich panels, trims & flashing match the same specification as panel materials. They are furnished for rakes, corners, eaves, and framed openings to provide weather tightness and a smooth finished appearance.

We also supply a wide range of coordinated accessories for complete insulated panel roof and walls installations, consists of translucent panels, ventilators, roof curbs, roof jacks, doors (personnel, sliding and roll-up), windows and louvers.

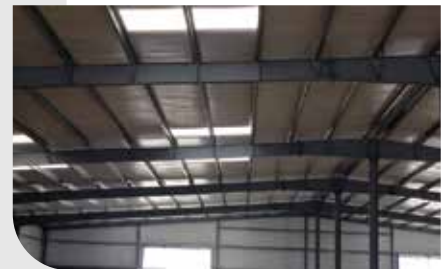
POLYURETHANE INSULATED PANELS



Roofing Polyurethane Insulated Panel

EuroSteel is one of the premier roofing systems available today, is a strong, weather-tight, The large panel size reduces the number of joints, and the high corrugation overlap joint reduced water leakage.

THERMAL HEAT TRANSMISSION (U-VALUE) FOR POLYURETHANE INSULATED PANEL						
	KRIP 40	KRIP 50	KRIP 60	KRIP 65	KRIP 75	KRIP 100
BTU/ft ² h. °F	0.085	0.070	0.059	0.055	0.048	0.037
KCAL/m ² h. °C	0.414	0.340	0.288	0.270	0.234	0.179
W/m ² .K	0.482	0.396	0.335	0.314	0.273	0.208



EuroSteel Wall Polyurethane Insulated Panel

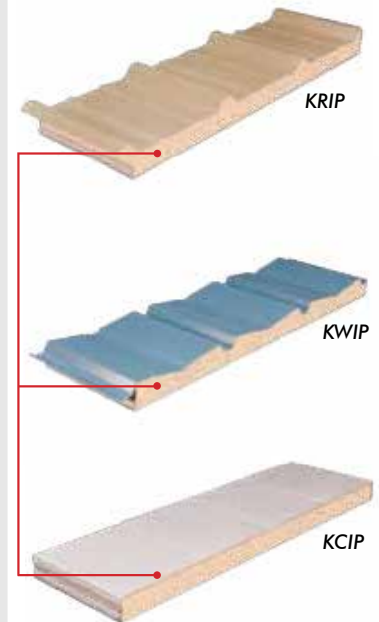
This profile is most suitable to overshadow the fasteners. It can be applied as External walls for commercial and industrial applications.

THERMAL HEAT TRANSMISSION (U-VALUE) FOR POLYURETHANE INSULATED PANEL					
	KWIP 40	KWIP 50	KWIP 60	KWIP 65	KWIP 75
BTU/ft ² h. °F	0.071	0.060	0.053	0.049	0.043
KCAL/m ² h. °C	0.347	0.293	0.256	0.238	0.211
W/m ² .K	0.404	0.341	0.298	0.277	0.246

EuroSteel Concealed Fastener Polyurethane Insulated Panels

As interior insulation is one of the most efficient insulations available. EuroSteel Concealed Fastener Insulated Panels provide the option to be used as interior partitioning in offices, Accommodation and areas where temperature control is essential.

THERMAL HEAT TRANSMISSION (U-VALUE) FOR POLYURETHANE INSULATED PANEL				
	KCIP 50	KCIP 60	KCIP 65	KCIP 75
BTU/ft ² h. °F	0.077	0.065	0.061	0.052
KCAL/m ² h. °C	0.378	0.315	0.294	0.252
W/m ² .K	0.440	0.367	0.342	0.293



STRUCTURAL STEEL

Pre-Engineered Buildings

- Production is based on Individual Project Specifications.
- International approved Standards, Work Procedures and Quality Assurance System.
- Accurate detailing and manufacturing techniques assure correct appearance and perfect fit at site.
- Design & Production System is integrated with that of the building structure – Ensuring on-time delivery.
- Our policy and obligations is to satisfy Customer's needs and expectations in terms of product Quality and Services.

Applications

- Aircraft Hangers
- Industrial Buildings
- Warehouses
- Workshops
- Commercial Buildings
- Retail & Wholesale Centers
- Camps Accommodations
- Offices
- Schools
- High Rise Buildings
- Villas



LIGHT GAUGE COLD-FORMED STEEL BUILDINGS

Advantages

- Safety against high seismic forces and cyclonic conditions.
- High Strength to weight ratio, resulting in economy.
- Dismantable & Relocatable.
- Single source of supply of entire building.
- Speedy delivery & faster erection.
- Insulated to suit various weather conditions.
- Flexible design to accommodate utility lines like plumbing, wiring, etc.
- Enhanced aesthetics.

Applications

- Health Centers
- Community Centers (Anganwadi)
- Schools
- Site Offices
- Mass Housing
- Relief Camps
- Labour Camps
- Military Camps

Special Features

- Spans up to 15 m.
- Clear height up to 3.0 m.
- Variety of sheetings: Galvanized, Galvalume (in various colours).
- Wall Options - sheeted, blockworks.
- Covered ceilings - Roof Liners.
- Insulation for Roof and Wall.
- Partition Walls.
- Customised Designed.
- Special accessories like doors, windows, ventilators, etc. can be provided.



HOUSING UNIT



HEALTH CENTRE



SITE OFFICE






RELIEF CAMP

ACCESSORIES (KR)

Roofing Accessories

				
<p>SKYLIGHTS AND WALL LIGHTS</p> <p>Made of translucent GRP to match Kirby roof and wall panels, with an estimated light transmitting capacity of %60.</p>	<p>RIDGE VENTILATORS</p> <p>Gravity type with bird screen and Mechanical control Damper, standard size is 3000 mm long with a throat opening of 300 mm.</p>	<p>POWERED VENTILATORS</p> <p>Kirby 'C' whirlwind low silhouette extract ventilator with spun aluminum non-return shutter and one piece base and throat. Mounted on GRP roof curb moulded to suit Kirby rib roof panels.</p>	<p>ROOF JACKS</p> <p>Enclosure for pipes or stacks projecting from the roof; 2mm thick GRP to fit Kirby roof panel. Available in opening sizes for 50 mm to 300 mm diameter.</p>	<p>ROOF CURBS</p> <p>Enclosure for ducts or other roof projections. 2 mm thick glass fibre reinforced plastic fitting Kirby Rib roof panels. Available in opening sizes 600 mm, 900 mm and 1200 mm squares.</p>


Windows and Louvers

		
<p>LOUVERS</p> <p>Fixed, adjustable and sand trap louvers with overlapping blades allowing free air flow. Size is 1 m x 1 m. incorporating insect screen, hand crank and blade adjustment lever.</p>	<p>SAND TRAP LOUVERS</p> <p>This louver consists of different form of flashings arrangement in a predetermined manner in order to create a sand trap. The dual advantage of the sand trap louver is not only help in natural ventilation but also act as a sand trap at the same time size is 1 m x 1.2 m and 2 m x 1.2m</p>	<p>ALUMINIUM WINDOWS</p> <p>Designed for installation with Kirby wall panel, double slide, self flashing with pre-glazed clear glass and removable half insect screen. Standard size is 1 m x 1 m. Multiple windows can be formed by joining the jamb fins together.</p>

Doors

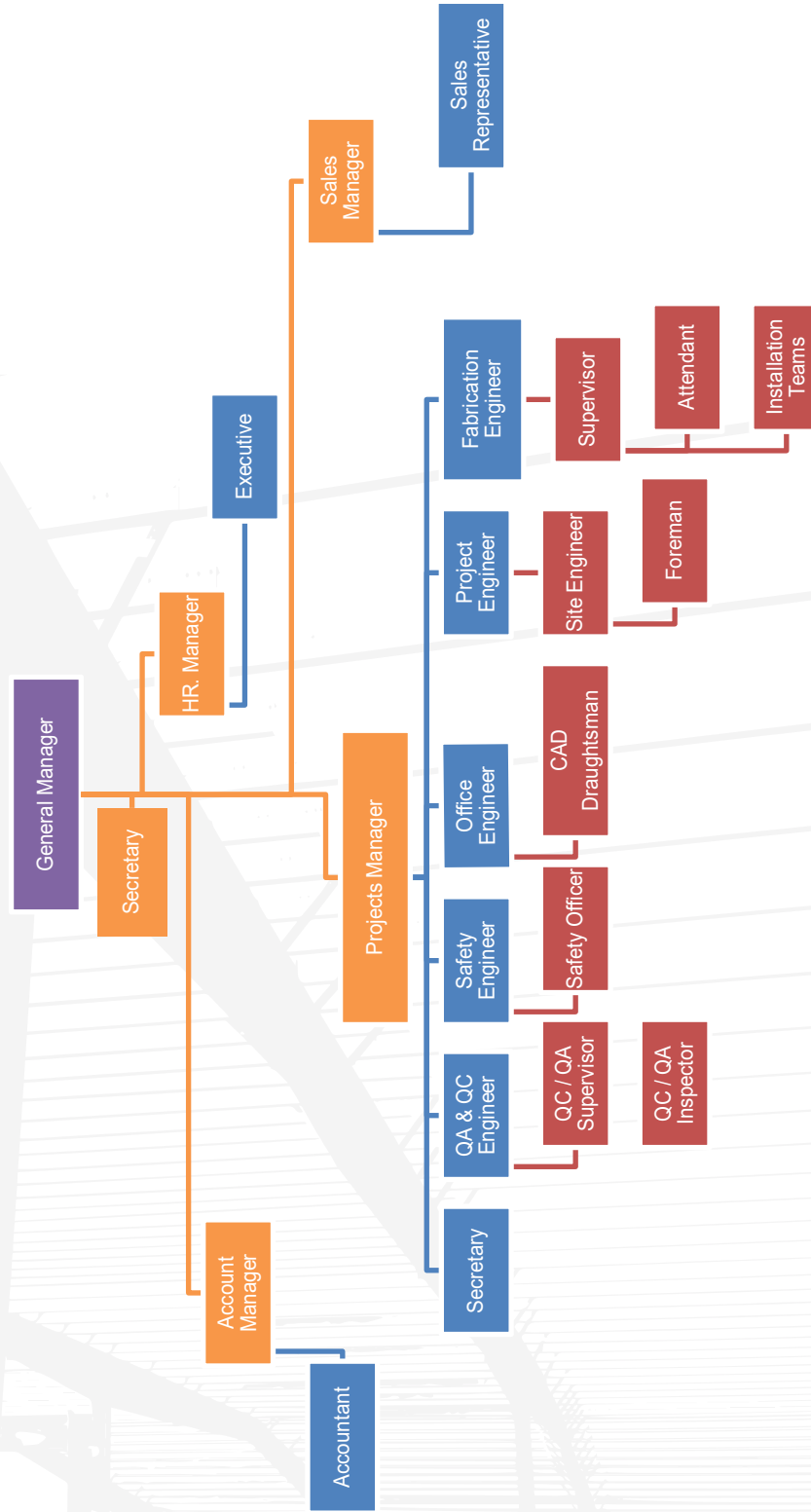
		
<p>SLIDING DOORS (SINGLE OR DOUBLE LEAF)</p> <p>3 m, 4 m and 5 m wide and 3 m to 5.5 m high. Other sizes are available on special order.</p>	<p>WALK DOORS(SINGLE OR DOUBLE)</p> <p>915 mm or 1830 mm wide x 2134 mm high made of 20 gauge electrogalvanised steel with a core of polyurethane insulation. Door fixture is provided.</p>	<p>AIRCRAFT HANGAR DOORS</p> <p>Kirby provides solutions for special applications such as aircraft hangars, customized hangar doors and framing, customized support systems for special equipment and maintenance cranes.</p>

Other Accessories

	
<p>FASTENERS</p> <p>Standard fasteners shall be No. 14, Type A, self drilling screws with metal and neoprene washers. All screws shall have hex heads and are zinc plated.</p>	<p>SEALANT</p> <p>Flexible sealer tapes made from Butyl rubber for sheeting sidelaps, endlaps and accessories.</p>

COMPANY ORGANIZATION CHART

EUROSTEEL FOR STEEL STRUCTURE & CONTRACTING COMPANY COMPANY ORGANIZATION CHART



ISO CERTIFICATES



ASSURE QUALITY
MANAGEMENT CERTIFICATION SERVICES PVT. LTD.

Certificate of Registration

QUALITY MANAGEMENT SYSTEM

This is to certify that



EURO STEEL FOR STEEL STRUCTURE & CONTRACTING COMPANY
OFFICE NO#54, BUILDING NO#5, SALWA ROAD, ST. NO#781, AREA#43, P.O BOX: 22270, DOHA,
QATAR

Has been assessed and found to be in accordance with the requirements of standard detailed below

ISO 9001:2015

For the following scope

Supply & Installation of Steel Structure Buildings and General Construction

Certificate Number: HI00HI/00IF:0818

Originally Registered: 23 Aug.2018 Latest Issue: 23 Aug.2018 Originally Expiry Date: 22 Aug.2021

Validity of this certificate is subject to annual surveillance audit to be done successfully on or before of 13 Aug.2019 & 13 Aug.2020 respectively. In case if surveillance audit is not allowed to be conducted; this certificate shall be suspended/withdrawn.



Jayaraman
For AQMCS PVT LTD

Validity of this certificate can be checked at www.jas-anz.org/registry. The validity of certificate is subject to continuous compliance the requirement of concerned standard & relevant provision of AQMCS customer contract & scheme of registration ADD (latest version) available at www.aqmcs.com. This certificate remains the property of AQMCS & shall be returned immediately at the request to AQMCS headquarters: 1172, Sector-11, Panchkula-134109, Tricity Chandigarh-India

© All copy right reserved





KIRBY

CERTIFICATES





BUILDER CERTIFICATION

This is to certify that

Euro Steel
is a Kirby Certified Builder in
Qatar
and is approved to supply and erect Kirby Buildings during 2015

April 16th 2015




Hatem Turki Baara
Director - Sales & Marketing
Kirby Building Systems



BUILDER CERTIFICATION

This is to certify that

EURO STEEL
is a Kirby Certified Builder in
QATAR
and is approved to supply and erect Kirby Buildings during 2016

April 11th 2016




James Minato
Sr. General Manager
Kirby Building Systems



BUILDER CERTIFICATION

This is to certify that

EURO STEEL

is a Kirby Certified Builder in
QATAR

and is approved to supply and erect Kirby Buildings during 2017

February 03rd 2017

James Minato
Sr. General Manager
Kirby Building Systems



BUILDER CERTIFICATION

This is to certify that

EURO STEEL FOR STEEL BUILDING

is a Kirby Certified Builder in
QATAR

and is approved to supply and erect Kirby Buildings during 2018

February 28, 2018

James Minato
Sr. General Manager
Kirby Building Systems



EURO STEEL
Steel Pioneer



BUILDER CERTIFICATION

This is to certify that

EURO STEEL

is a Kirby Certified Builder in
Sultanate of Oman

and is approved to supply and erect Kirby Buildings during 2017

September 20th 2017



James Minato
Sr. General Manager
Kirby Building Systems



BUILDER CERTIFICATION

This is to certify that

EURO STEEL TRADING & CONTRACTING

is a Kirby Certified Builder in
Sultanate of Oman

and is approved to supply and erect Kirby Buildings during 2018

February 3rd, 2018



James Minato
Sr. General Manager
Kirby Building Systems



EURO STEEL
Steel Pioneer

CUSTOMERS



US Army Corps
of Engineers®



Gulf Supplies & Commercial Services



UNITED CONSTRUCTION EST.
المؤسسة المتحدة للإنشاءات





GASCO
GAS EQUIPMENT & SERVICES CO., QATAR LTD.



دومو بان
DOMOPAN



ALTAYEB TRADING
EST.



Al Balagh Trading & Contracting Co



AL-BETREEQ



AL-SARH TRADING & CONTRACTING



TESTIMONIALS





شركة الخليج للتجهيزات والخدمات التجارية م.م
GULF SUPPLIES & COMMERCIAL SERVICES Co. W.L.L.

M/S: Euro Steel / Kirby Certified Supplier and Builder

June 12, 2014

KW-15269 Three Buildings
US Army Corps of Engineers Project

Re: Letter of Appreciation

Attn: Eng Mohammad khair Mohammad

We would like to send this letter of appreciation to your company. We want you to know that we are very pleased with the quality of the product and the level of service your company provides. We sincerely appreciate your responsiveness and the way you conduct business. We look forward to doing business with you in our future projects.

Thank you again and we hope the best for you and your company.


Al Tukker
Project Manager / Construction Manager
Gulf Supplies Commercial Services Co. W.L.L.

Gulf Supplies & Commercial
Services Co. W.L.L.
P.O. Box: 22187
Doha-Qatar



EURO STEEL
Steel Pioneer

Date: 01/03/2015

M/S. Eurosteel for Steel Structure
Kirby Certified Supplier & Builder

Attn: Mr. Mohammad Khlar Mohammad
Projects Manager

Subject: KW-15813 STORE

Regarding to above subject we would like to thank your company for the efforts and good cooperation with us during all period of finishing our Store in New Industrial Area, Doha, Qatar since you have respect all times starting from design period up to erection and final hand over of building.

We sincerely appreciate your responsiveness and the way you conduct business.

Thanking you again for the cooperation and wish all regards to your esteemed company.

Best Regards,

General Manager



ص.ب. 33048 - دoha - قطر | هاتف: +974 44877003 | فاكس: +974 44877002 | بريد إلكتروني: info@inshaco.com | www.inshaco.com



Date: 25/02/2015

M/S. Eurosteel for Steel Structure
Kirby Certified Supplier & Builder

Attn: Mr. Mohammad Khlar Mohammad
Projects Manager

Subject: KW-16146 Labor Camp

Regarding to above subject we would like to thank your company for the efforts and good cooperation with us during all period of finishing our Labor Camp In Um Alalfai, Doha, Qatar since you have respect all times starting from design period up to erection and final hand over of building.

We sincerely appreciate your responsiveness and the way you conduct business.

Thanking you again for the cooperation and wish all regards to your esteemed company.

Best Regards,

General Manager



 شركة جناس للمقاولات
JANAS CONTRACTING COMPANY

Date: 15/07/2014
Ref: JCC/2455/07/2014

To

Attn: Eng. Mohammad Khair,
M/s. Kirby Building Systems,

Sub: KW-15901

Dear Sir,

Reference to the above project we would like to thank you for the efforts in both design and delivery of steel building to our Doha Aluminium Factory Project, Industrial Area, Doha, Qatar.

Thanking you again for the co operation and wish all regards to you and your esteemed company.

Best regards,

Shk.Salman Mohamed A J Al-Thani
Executive Director.





JANAS CONTRACTING COMPANY WLL, P.O.BOX - 7504, DOHA - QATAR.
TEL:+974 44878812 FAX:+974 44861127 EMAIL:jcc@janas.com.qa

MAIS QATAR
Cont& Electromech



ميس قطر
للمقاولات والإلكترونيك

Date:3/04/2013

To : Eng. Mohammad khair mohammad

Euro steel / Certify Builder of Kirby

We take this opportunity to express our sincere thanks and appreciation for total hard work and good job you have been doing at our job no 14178 without your total dedication and extra hours that you have been putting personally . we wouldn't have been able to achieve what we have now , we hope your efforts will continue the same when required till the completion of our projects.

We serve you this letter of thanks as a recognition to your efforts and support

Thank you and all the best




GENERAL MANAGER

ENG: ZEAD MENZALJE

تلفون : ٤٤٥٠٣٦١٣ - ٤٤٥٠٣٦١٤ - فاكس : ٤٤٥٠٣٦١٣ - ٤٤٥٠٣٦١٤ - ب.ص : ٢٩٧١ - الدوحة - قطر
Email - maisqatar@gmail.com - Tel : 44503624-44503613 - Fax : 44503278 - P.O. Box:2971-Doha-Qatar

Ref:2015/S1/ATH
Date:25/01/2015

M/S: Euro Steel
Attn: Eng Mohammad khair Mohammad

Subject: kw-15596 TILES FACTORY

Regarding to above subject we would like to thank you and your company for your efforts and good cooperation with us during all period of finishing our factory in industrial area Doha Qatar since you have respect all times starting from design period , delivery up to final hand over .

We are so glad to cooperate with you and your company and we like to keep this good relation between us for any future projects

Thank you again and we hope the best for you and your company

GM
Athar trading and contracting company

Ref:2015/S1/ATH
Date:25/01/2015

M/S: Euro Steel
Attn: Eng Mohammad khair Mohammad

Subject: kw-15446 polymers FACTORY

Regarding to above subject we would like to thank you and your company for your efforts and good cooperation with us during all period of finishing our factory in industrial area Doha Qatar since you have respect all times starting from design period , delivery up to final hand over .

We are so glad to cooperate with you and your company and we like to keep this good relation between us for any future projects

Thank you again and we hope the best for you and your company

GM
Athar trading and contracting company



الجابر للحلول العمرانية والتطوير
Al Jaber solutions & urban Development

Ref:12/45/1234L
Date:04/05/14

M/S: Euro Steel / Kirby certified supplier and builder
Attn: Eng Mohammad khiar Mohammad

Subject: kw-15259 JUICE FACTORY

Regarding to above subject we would like to thank you and your company for your efforts and good cooperation with us during all period of finishing our factory in industrial area Doha Qatar since you have respect all times starting from design period up to delivery .
And we would like to thank eng Mohammad khiar for his personal efforts and his help during erection we appreciate to much his huge visits to site During erection period

We are so glad to cooperate with you and your company and we like to keep this good relation between us for any future projects

Thank you again and we hope the best for you and your company

GM
AL JABER REAL STAE



Mohammed Hayil group
Trading & Contracting (P.L.L)



مجموعة محمد هائل
للإدارة والمقاولات (ذ.م.م)

Date: December, ٢٠١٢, ٢٤

M/S. EUROSTEEL FOR STEEL STRUCTURE
KIRBY CERTIFIED SUPPLIER & BUILDER
DOHA, QATAR

ATTN: MR. MOHAMMAD KHIAR MOHAMMAD
PROJECTS MANAGER

SUBJECT: RK-٠٥٢٢٠ LABOR CAMP

Regarding to above subject, we would like to thank your company for the efforts and good cooperation with us during all period of execution our project in Um Alafai Site, Doha, Qatar since you have respect all times starting from design period up to erection and final hand over of building.

We sincerely appreciate your responsiveness and the way you conduct business.

We are Looking for good relation with your esteemed company in the future.

Regards,

FOR MOHAMMED HAYIL GROUP

ENG. MOHAMMED HAYIL
CHIEF EXECUTIVE OFFICER



Tel: 44894433 - Fax: 44889434 - Head Office, Tel: 44693348 - 44699183 - Fax: 44692664 - P.O.Box: 96931 - Doha - Qatar
E-mail: info@hayilgroup.com Web: www.hayilgroup.com

مصنع سن كول لصناعة المكيفات (ذ.م.ق)

Date: 01/01/2015

M/S. Eurosteel for Steel Structure
Kirby Certified Supplier & Builder

Attn: Mr. Mohammad Khair Mohammad
Projects Manager

Subject: KW-16143 Air Condition Factory

Regarding to above subject we would like to thank your company for the efforts and good cooperation with us during all period of finishing our Air Condition Factory in New Industrial Area, Doha, Qatar since you have respect all times starting from design period up to erection and final hand over of building.

We sincerely appreciate your responsiveness and the way you conduct business.

Thanking you again for the cooperation and wish all regards to your esteemed company.

Best Regards,

General Manager



Mobile : +974 55529610 شركة البتريق العالمية للصناعة
+974 55032328 +974 44516124
Fax : +974 44516124 AI-BETREEQ INTERNATIONAL FOR INDUSTRIES
P.O.Box : 10870
C.R. No. : 40012
E-mail : betreeq-int-trade@hotmail.com

Date: 11/03/2015

M/S. Eurosteel for Steel Structure
Kirby Certified Supplier & Builder

Attn: Mr. Mohammad Khair Mohammad
Projects Manager

Subject: KW-15313 Plastic Factory

Regarding to above subject we would like to thank your company for the efforts and good cooperation with us during all period of finishing our Plastic Factory in New Industrial Area, Doha - Qatar since you have respect all times starting from design period up to erection and final hand over of building.

We sincerely appreciate your responsiveness and the way you conduct business.

Thanking you again for the cooperation and wish all regards to your esteemed company.

Best Regards

General Manager



Al Badeel General Contracting

PO Box 48299, Abu Dhabi, UAE
Tel No.: +971 2 641 2212
Fax No.: +971 2 641 2242



المبني للمقاولات العامة

ص.ب ٤٨٢٩٩
القطر: +٩٧١٢٦٤١٢٢١٢
الفاكس: +٩٧١٢٦٤١٢٢٤٢

1 March 2015

EURO STEEL

Kirby Certified Supplier and Builder

Doha, Qatar

TEL: +97444600784

FAX: +97444500957

MOB: +97455570461

Attn: Mr Mohammad Khair Mohammad, Projects Manager

Subject: KW-15871(1)

Regarding to above subject, ABGC would like to thank your company for the work done in completing our Project at Al Dhafra Base, UAE. We acknowledged your support in providing comprehensive design, technical support & submittals and on-time delivery of all materials as per the project schedule.

We sincerely appreciate your responsiveness and the way you conduct business.

We hope all the best to your company and may we have more projects to work in the future.

Best regards,

Kirk Brandon

Project Manager



Al Badeel General Contracting

PO Box 48299, Abu Dhabi, UAE
Tel No.: +971 2 641 2212
Fax No.: +971 2 641 2242



المبني للمقاولات العامة

ص.ب ٤٨٢٩٩
القطر: +٩٧١٢٦٤١٢٢١٢
الفاكس: +٩٧١٢٦٤١٢٢٤٢

4 March 2015

EURO STEEL

Kirby Certified Supplier and Builder

Doha, Qatar

TEL: +97444600784

FAX: +97444500957

MOB: +97455570461

Attn: Mr Mohammad Khair Mohammad, Projects Manager

Subject: KW-15871(B-C-D-E-H)

ABGC expresses our appreciation to your team who worked on the Kuwait Project in Ali Al Salem Air Base. We would like to commend you on your excellent service in understanding the requirement and providing proper technical Submittal in a timely manner. We would like also to thank your Design Team for the responsiveness in clarifying technical questions.

We look forward to work with you on future projects.

Best regards,

Aj Hamada

Director of Construction and Engineering



PROJECTS COMPLETED & ONGOING

EUROSTEEL FOR STEEL STRUCTURE & CONTRACTING COMPANY LIST OF MAJOR COMPLETED PROJECTS



SR	OWNER	CLIENT	PROJECT NAME	PROJECT LOCATION	CONTRACT VALUE	CONSULTANT	DATE OF COMPLETION
1	QATAR DEVELOPMENT BANK	INSHA TRADING & CONTRACTING COMPANY	32 INDUSTRIAL FACILITIES	INDUSTRIAL AREA - QATAR	48,000,000.00	ARAB CONSULTING ENGINEERING	April 15, 2017
2	MANATEQ (ECONOMIC ZONE COMPANY)	INSHA TRADING & CONTRACTING COMPANY	NEW CENTRAL MARKET	AL - SAILIYA, UM SLAL . ALWAKRAH - QATAR	18,000,000.00	UNITED CONSULTANTS	May 31, 2018
3	MOHAMMED HAYIL GROUP TRAD. & CONT. CO.	AL SARAH HOLDING GROUP	AL HAYIL CERAMIC FACTORY	SULTANATE OF OMAN	15,000,000.00	OMAN	September 10, 2017
4	INTERNAL SECURITY FORCE (ISF)	COMPLETE SOURCE ONE (CSO)	ZEKRET PROJECT	ZEKRET - QATAR	11,000,000.00	ALOWAS CONSULTANT	May 30, 2016
5	QMJV	QATAR BUILDING COMPANY & MSF ENGENHARIA S.A. JOINT VENTURE	NAVAL BASE	NEW PORT PROJECT - QATAR	7,520,000.00	AECOM	March 31, 2019
6	QATAR ARMED FORCES	GET	TAREK BIN ZIAD BASE	ALSALIYA- QATAR	6,000,000.00	ERGA	December 31, 2018
7	KIA QATAR	SATAL QATAR COMPANY	CARS STORAGE AT NEW INDUSTRIAL AREA.	BERKET AL AWOAMER - QATAR	3,100,000.00	SICO CONSULTANTS	August 31, 2014
8	ATHAR TRADING & CONTRACTING CO.	ATHAR TRADING & CONTRACTING CO.	ALNEBRAS ELECTRICAL FACTORY	INDUSTRIAL AREA - QATAR	2,750,000.00	ALMERAD CONSULTING	November 30, 2016
9	MOHAMMED HAYIL GROUP TRAD. & CONT. CO.	INSHA TRADING & CONTRACTING COMPANY	SUN COOL FACTORY	INDUSTRIAL AREA - QATAR	2,630,950.00	UNITED ARCHITECTURAL	February 28, 2016
10	QATAR BUILDING COMPANY	QATAR BUILDING COMPANY	LAFFAN PRECAST FACTORY	MESSAIED - QATAR	2,150,000.00	ALBARAHA CONSULTANTS	June 15, 2018
11	AL WATANIYA STEEL SECTIONS	AL WATANIYA STEEL SECTIONS	LABOR CAMP	INDUSTRIAL AREA - QATAR	1,895,000.00	ALJAZEERA CONSULTANT	March 20, 2013
12	INTERNAL SECURITY FORCE (ISF)	COMPLETE SOURCE ONE (CSO)	UM ALAFAI PROJECT	UM ALAFAI - QATAR	1,790,000.00	ALOWAS CONSULTANT	November 15, 2015
13	QATAR BUILDING MATERIALS	QATAR BUILDING MATERIALS	BUILDING MATERIALS STORAGE IN NEW INDUSTRIAL AREA	BERKET AL AWOAMER - QATAR	1,784,000.00	ALBARAHA CONSULTANTS	March 30, 2017
14	ALTAYEB TRADING EST.	ALTAYEB TRADING EST.	WAREHOUSE IN NEW INDUSTRIAL AREA	BERKET AL AWOAMER - QATAR	1,784,000.00	ALBARAHA CONSULTANTS	February 28, 2017
15	THRIFTY CAR RENTAL	THRIFTY CAR RENTAL	TRANSPORTATIONS STORAGE IN NEW INDUSTRIAL AREA.	BERKET AL AWOAMER - QATAR	1,725,000.00	UNITED ENGINEERING	April 20, 2016
16	ALTADAMON CAR RENTAL	ALTADAMON CAR RENTAL	TRANSPORTATIONS STORAGE IN NEW INDUSTRIAL AREA.	BERKET AL AWOAMER - QATAR	1,725,000.00	UNITED ENGINEERING	May 5, 2016
17	QATAR GYPSUM BOARD CO.	QATAR GYPSUM BOARD COMPANY	QATAR GYPSUM PRODUCTION PLANT	AL- HAFUUF - KSA	1,700,000.00	KSA	December 15, 2016
18	DOMOBAN QATAR COMPANY	DOMOBAN QATAR	STORE IN NEW INDUSTRIAL AREA	BERKET AL AWOAMER - QATAR	1,597,000.00	ALBARAHA CONSULTANTS	December 15, 2015
19	US ARMY - QATAR	GULF SUPPLIES & COMMERCIAL SERVICES CO. GSCS	8 STEEL STRUCTURE BUILDINGS	AL UDAID - QATAR	1,500,000.00	CORPS OF ENGINEERING	November 10, 2014
20	PRIVATE ENGINEERING OFFICE	CONTRACO	MARINA OPEN TERRACE- SALWA RESORT	SALWA ROAD - QATAR	1,500,000.00	DAR ALHANDASAH	November 30, 2018
21	MOHAMMED HAYIL GROUP TRAD. & CONT. CO.	INSHA TRADING & CONTRACTING COMPANY	STORE IN INDUSTRIAL AREA	INDUSTRIAL AREA - QATAR	1,410,000.00	ALNEEL CONSULTANTS	September 15, 2015
22	ALTHARIYAT TRAD. & CONT. CO.	NASER R. ALMANSOURI	STORE IN NEW INDUSTRIAL AREA	BERKET AL AWOAMER - QATAR	1,352,000.00	ALMERAD CONSULTING	October 10, 2014
23	GULF HELICOPTER	M. H. ALMUFTAH EST.	G. H. SIMULATOR	RAS ABU ABOOD- QATAR	1,300,000.00	ALOWAS CONSULTANT	June 30, 2016
24	UNITED METAL INDUSTRIES	UNITED METAL INDUSTRIES	STEEL FACTORY	SUHAR - SULTANATE OF OMAN	1,300,000.00	OMAN	September 30, 2018
25	SHEIKH MOHAMMAD BIN JASIM AL THANI	ATHAR TRADING & CONTRACTING CO.	ALNEBRAS WOOD FACTORY IN NEW INDUSTRIAL AREA	BERKET AL AWOAMER - QATAR	1,225,000.00	ALMERAD CONSULTING	August 20, 2016
26	SHEIKH MOHAMMAD BIN JASIM AL THANI	ATHAR TRADING & CONTRACTING CO.	STORE IN INDUSTRIAL AREA ST. 50	INDUSTRIAL AREA - QATAR	1,175,000.00	ALWAHA CONSULTING	October 30, 2014
27	KHALED AL MANA	ALRAKAEZ COMPANY	WAREHOUSE IN INDUSTRIAL AREA	INDUSTRIAL AREA - QATAR	1,030,000.00	UDC	June 15, 2016
28	SHEIKHA MARYAM J ALTHANI	NATIONAL PLASTIC FACTORY	PLASTIC FACTORY WAREHOUSE	NEW IND. AREA - QATAR	1,000,000.00	ALMERAD CONSULTING	December 15, 2018

OFFICES LOCATION MAP

EUROSTEEL - QATAR LOCATION MAP



EUROSTEEL - OMAN LOCATION MAP



OUR PROJECTS PHOTOS



AL WATANIYA STEEL LABOR CAMP



KIA CAR STORAGE



ABGC - AL DAFRA BASE



KIA CAR STORAGE



AIR CONDITION FACTORY



KIA CAR STORAGE



AL WATANIYA STEEL LABOUR CAMP

Our Projects



THRIFTY CAR RENTAL STORE



AL TADAMAN REANT A CAR STORE



KIA CAR STORAGE



MHG LABOUR CAMP



INSHA LABOUR CAMP



THRIFTY CAR RENTAL STORE



QBC TRANSPORTATION STORE



AL NEBRAS ELECTRICAL SHOP

Our Projects



GSCS - US ARMY STORE



AL WATANIYA STEEL STORE



MHG - LABOUR CAMP



MHG - LABOUR CAMP



KIA CAT STORAGE



ATHAR - POLYMAR FACTORY



INSHA LABOUR CAMP



**AL WATANIYA STEEL SECTION
LABOUR CAMP**

Our Projects



ALBALGH - AIR BASE



GSCS - US ARMY STORAGE



ABGC - AIR BASE



GSCS - US ARMY STORAGES



ALWATANIYA STEEL FACTORY



ALNEBRAS WOOD FACTORY



GSCS - US ARMY STORAGES



DOMOBAN QATAR STORE

Our Projects



Our Projects



Our Projects



**AL-WATANIA
STEEL FACTORY**



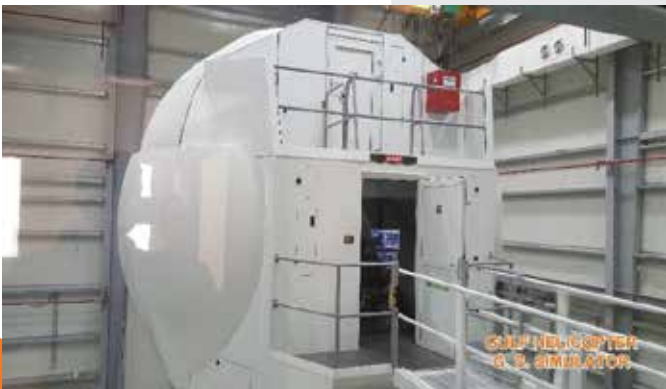
**AL-WATANIA
STEEL FACTORY**



**AL-WATANIA
STEEL FACTORY**



**AL-WATANIA
STEEL FACTORY**



Our Projects



Our Projects



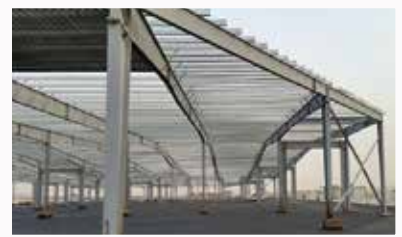
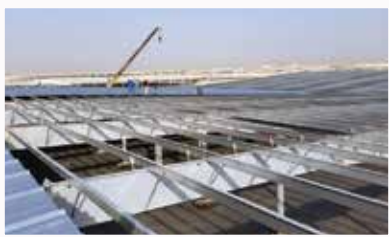
New Central market , Manateq, Al sailiya.



Our Projects



Committed to Excellence



www.kirbybuilder.com

EURO STEEL QATAR
P. O. Box: 22270 Doha, Qatar
Mob: +974 555 70 461
Tel.: +974 449 38 325
Fax: +974 449 30 079
E-mail: info@kirbybuilder.com
info@eurosteelinternational.com

www.eurosteelinternational.com

EURO STEEL OMAN
P. O. Box: 615 Muscat, Oman
Mob: + 968 958 510 56
Tel.: +968 241 352 06
Fax: +968 241 369 67
E-mail: info@kirbybuilder.com
info@eurosteelinternational.com